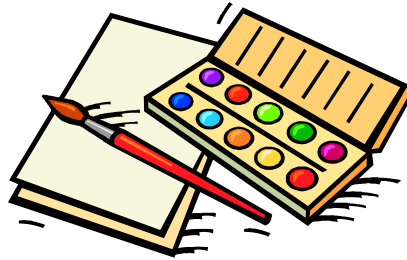


Course Syllabus 2008-2009:



# WORLD HISTORY THROUGH ART

**Instructor:** Mr. R. Finner

**Phone:** (414) 906-5143 (voice mail)

**Room:** 303

## Course Description

This one-semester course will expose students to art from various regions around the world. Students will learn to analyze various genres of art (painting, sculpture, architecture, pottery, etc.) as sources to study the history of ancient, medieval and modern civilizations of Africa, Asia, Latin America and North America.

## Course Requirements

1. Supplies: 3- ring binder w/ loose leaf paper or spiral notebook and folder.
2. Success in this class is dependent upon daily active participation in all class activities. Students are expected to attend class regularly and be on time. Note-taking is an important activity in this course. Students are expected to maintain an up-to-date record of class assignments and notes in their notebooks. Notebooks should be brought to class daily. Class discussion is also a vital element. Students are expected to be willing to share their ideas and viewpoints in class on a regular basis.
3. Students who are absent should make up all missed work in a timely fashion. This will be determined by mutual agreement between student and teacher.

4. Students are to conduct themselves in a responsible manner and be accountable for their actions. It is fully expected that respect is to be shown for the rights and property of the teacher and classmates. Students are expected to abide by RUHS rules and procedures.
5. Students are expected to put forth **their best effort** on all assigned work.

## Grading

Every six weeks, your mark period grade will be determined based on the total amount of points accumulated on all assignments. The types of assignments include: classwork (in-class assignments), notebook checks, quizzes and essays.

All assigned work will be graded using the scale below.

A=100%-90%    B=89%-80%    C=79%-70%    D=69%-60%    U=59%-below  
(failing)

Since the number of assignments will vary each mark period, mark period letter grades will be given based on the *percentage* of points earned out of the total amount of points available. For example, if 1,000 points were the total amount of points available for the mark period, a student earning 850 points would receive a "B" (85%).

At the end of the semester, the following formula will be used to determine the final grade for the semester.

|                      |            |
|----------------------|------------|
| 3 Mark Period Grades | 75%        |
| <u>Final Exam</u>    | <u>25%</u> |
| Semester Grade       | 100%       |

## Course Topics

- Introduction to Art History
- Art in Ancient Times
- Classical Art
- Art During the Middle Ages
- European Renaissance
- Age of Revolutions (1500-1900)
- 20<sup>th</sup> Century Art

Riverside University High School

# UNITED STATES HISTORY



## Course Syllabus 2008-2009

Instructor: Mr. R. Finner  
Phone: (414) 906-5143 (voice mail)  
Room: 303

### Course Description

Students in this class will study the political, economic and social development of the U.S. from its 17<sup>th</sup> century origins to the present. Emphasis will be placed on the contributions of the diverse cultures of “American” society to life in the U.S. today.

### Course Requirements

6. Supplies: 3-ring binder w/ loose leaf paper or spiral notebook and folder.
7. Text: *The Americans* Mc Dougal Littell
8. Success in this class is dependent upon daily active participation in all class activities. Students are expected to attend class regularly and be on time. It is also expected that students bring the textbook and notebook to class on a daily basis.
9. Students who are absent should make up all missed work in a timely fashion. This will be determined by mutual agreement between student and teacher.
10. Students are to conduct themselves in a responsible manner and be accountable for their actions. It is fully expected that respect is to be shown for the rights and property of the teacher and classmates. Students are expected to follow RUHS rules and procedures.
11. Students are expected to put forth *their best effort* on all assigned work.

### Grading

Every six weeks, your mark period grade will be determined based on the total amount of points accumulated on all assignments. The types of assignments include: homework, classwork (in-class assignments), notebook checks, tests and projects.

All assigned work will be graded using the scale below.

A=100%-90%    B=89%-80%    C=79%-70%    D=69%-60%    U=59%-0 (failing)

Since the number of assignments will vary each mark period, mark period letter grades will be given based on the *percentage* of points earned out of the total amount of points available. For example, if 1,000 points were the total amount of points available for the mark period, a student earning 850 points would receive a "B" (85%).

At the end of each semester, the following formula will be used to determine the final grade for the semester.

|                      |            |
|----------------------|------------|
| 3 Mark Period Grades | 75%        |
| <u>Final Exam</u>    | <u>25%</u> |
| Semester Grade       | 100%       |

### **Homework Policy**

In this course, homework is assigned on a daily basis. Assignments may take the form of reading, finishing an assignment started in class, studying for a test or other types of written work.

- Assignments will be posted on the front chalkboard.
- Unless stated otherwise, assignments are due at the beginning of class on the scheduled due date.
- Late assignments (due to absence) will only be accepted with appropriate written documentation explaining the absence.

### **Course Topics**

- Three Worlds Meet
- American Colonial Period
- American Revolution
- A New Nation (U.S. Constitution/ Washington & Jefferson)
- Nationalism/ Slavery/Women
- Westward/Market Expansion
- U.S. Civil War
- Reconstruction
- Western Frontier
- Industrialization/ Immigration/ Urbanization
- Early 20<sup>th</sup> Century
- American Imperialism/ World War I
- 1920s
- Great Depression/ New Deal
- World War II
- Post-War World



# WORLD HISTORY



## Course Syllabus 2008-2009

Instructor: Mr. R. Finner  
Phone: (414) 906-5143 (voice mail)  
Room: 303

### Course Description

In this class, we will study the history of various regions around the world. Students will study selected civilizations and empires in Africa, Asia, Europe, North and South America. In each area, we will explore topics related to geography, politics, economics, culture and society.

### Course Requirements

12. Supplies: 3- ring binder w/loose leaf paper or spiral notebook and folder.
13. Text: *World History: Patterns of Interaction* McDougal Littell
14. Success in this class is dependent upon daily active participation in all class activities. Students are expected to attend class regularly and be on time. It is also expected that students bring the textbook and notebook to class on a daily basis.
15. Students who are absent should make up all missed work in a timely fashion. This will be determined by mutual agreement between student and teacher.
16. Students are to conduct themselves in a responsible manner and be accountable for their actions. It is fully expected that respect is to be shown for the rights and property of the teacher and classmates. Students are expected to follow RUHS rules and procedures.
17. Students are expected to put forth *their best effort* on all assigned work.



## Grading

Every six weeks, your mark period grade will be determined based on the total amount of points accumulated on all assignments. The types of assignments include: homework, classwork (in-class assignments), notebook checks, quizzes, tests and projects.

All assigned work will be graded using the scale below.

**A=100%-90%**    **B=89%-80%**    **C=79%-70%**    **D=69%-60%**    **U=59%-below (failing)**

Since the number of assignments will vary each mark period, mark period letter grades will be given based on the *percentage* of points earned out of the total amount of points available. For example, if 1,000 points were the total amount of points available for the mark period, a student earning 850 points would receive a "B" (85%).

At the end of each semester, the following formula will be used to determine the final grade for the semester.

|                      |            |
|----------------------|------------|
| 3 Mark Period Grades | 75%        |
| <u>Final Exam</u>    | <u>25%</u> |
| Semester Grade       | 100%       |

## Homework Policy

In this course, homework is assigned on a daily basis. Assignments may take the form of reading, finishing an assignment started in class, studying for a test or other types of written work.

- Assignments will be posted on the front chalkboard.
- Unless stated otherwise, assignments are due at the beginning of class on the scheduled due date.
- Late assignments (due to absence) will only be accepted with appropriate written documentation explaining the absence.

## Course Topics

- Ancient Civilizations
- Classical Greece
- Classical Rome
- African Civilizations
- The Americas
- Byzantines/Russians/Turks
- Empires in East Asia
- Middle Ages in Europe
- Middle Ages in Africa & the Americas
- European Renaissance/ Reformation
- Age of Exploration
- The Atlantic World

